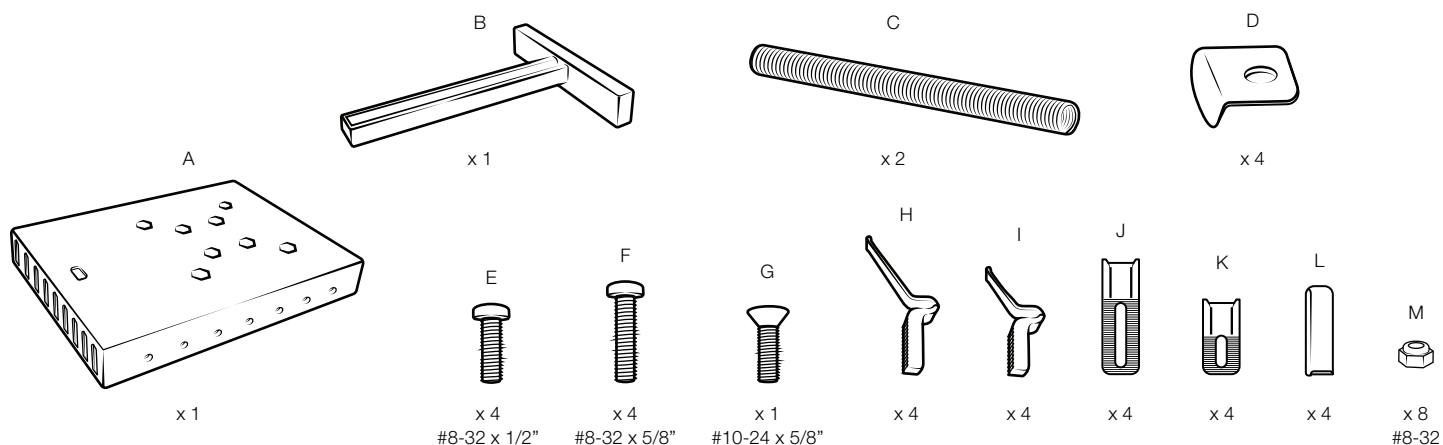
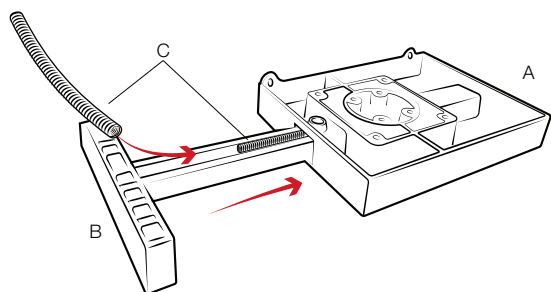


Parts Index

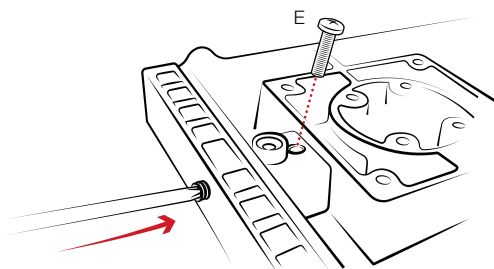
*not to scale



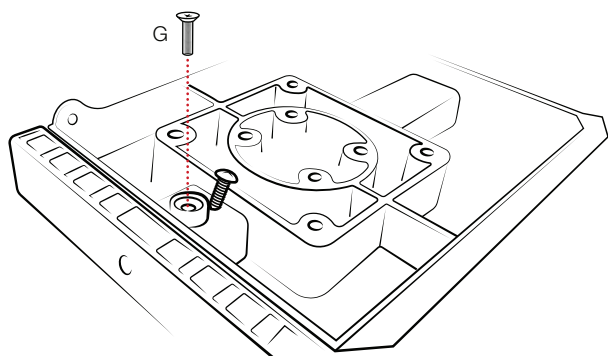
- 1 Place springs into center slot of (B) tray slide. Spring will slightly protrude from side hole.



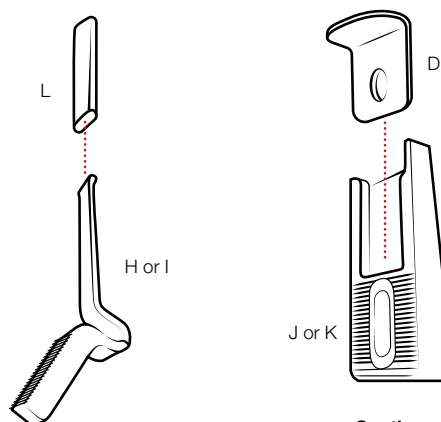
- 2 Using a screwdriver, press springs into tray. While holding springs down, wedge one of the (E) screws into the smaller hole to jam the springs in place. Remove pen or screwdriver.



- 3 With spring wedged in place, attach (G) screw through countersunk hole. Once tightened, remove (E) screw from spring.



- 4 Select preferred side arms for your device. For flat-style arms fit (D) L-brackets with (J or K) side arms. For flex-style arms fit (L) caps onto ends of (H or I) flex arms.



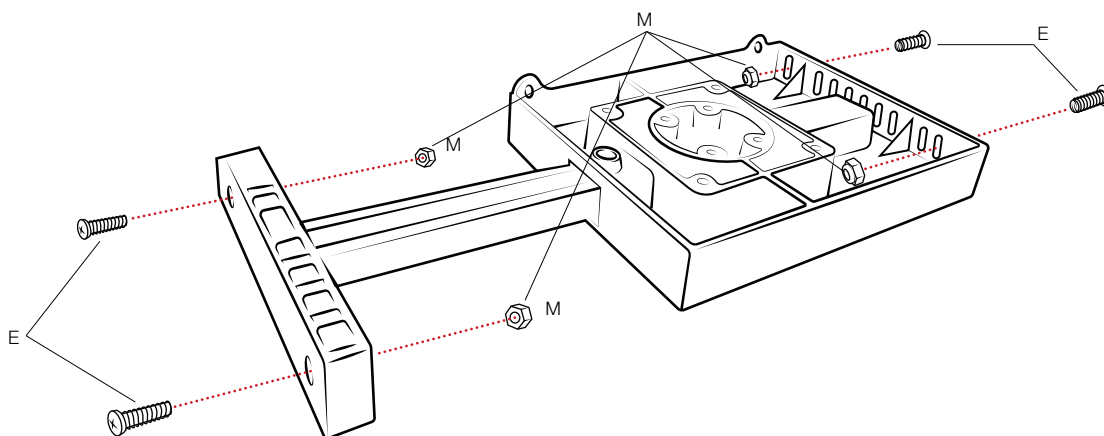
Continue on back →



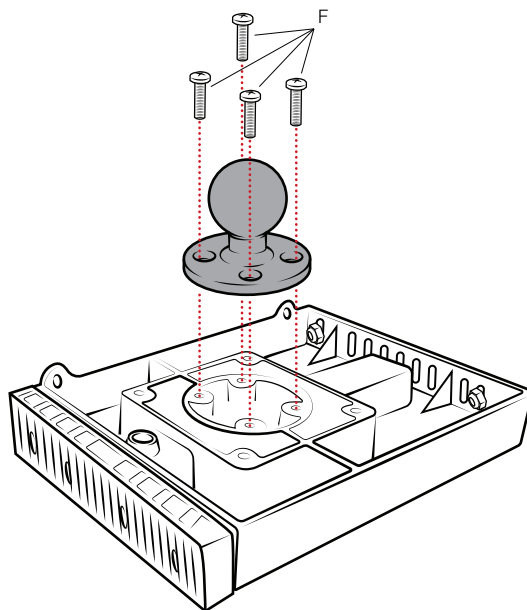
Safety Precaution

Do not install this product near or over an airbag deployment area or in a location that obstructs the driver's vision or interferes with vehicle operation. National Products, Inc does not assume responsibility or liability for any such personal injury, death or property damage.

- 5 Attach selected arms using (E) screws and (M) nuts. Before tightening, adjust arms appropriately to best fit device.



- 6 Use (F) screws and rest of (M) nuts to attach RAM® Tough-Tray™ to any RAM® Mount.



RMR-INS-2346



Safety Precaution

Do not install this product near or over an airbag deployment area or in a location that obstructs the driver's vision or interferes with vehicle operation. National Products, Inc does not assume responsibility or liability for any such personal injury, death or property damage.